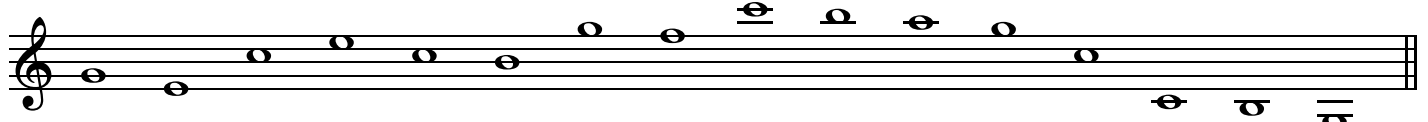
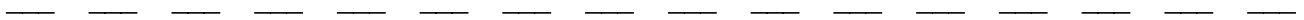
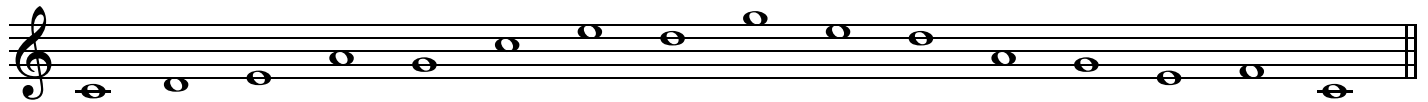
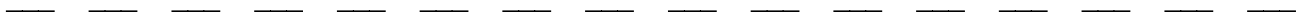
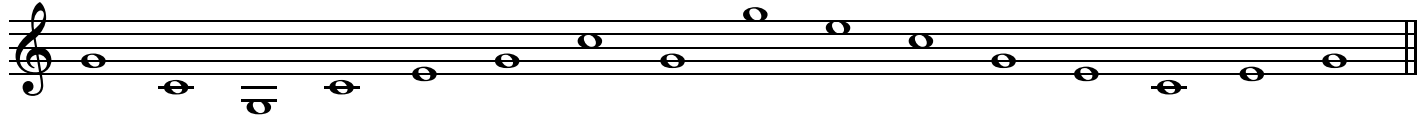
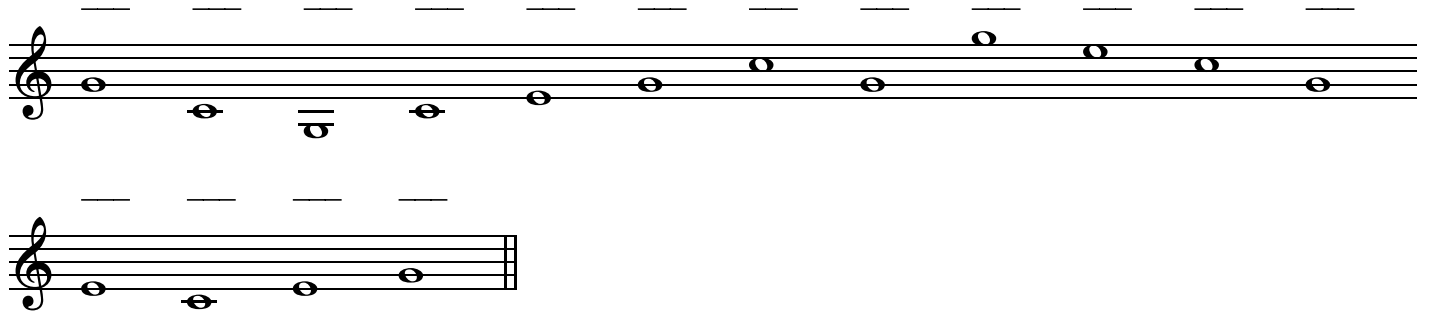

Identifying Notes in Treble Clef

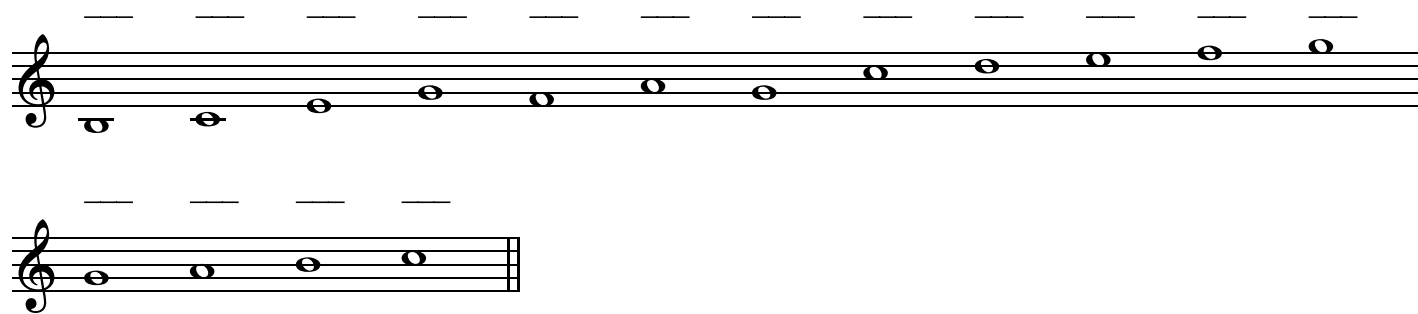
PRACTICE DRILL

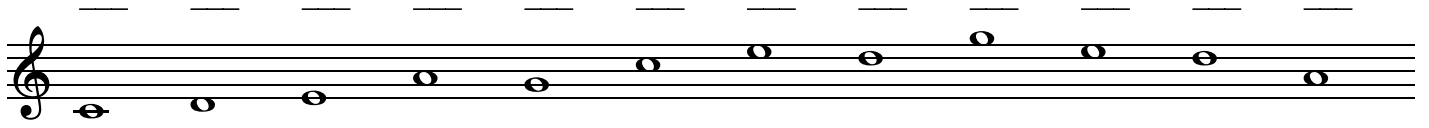
What's that note? Here's a drill to practice identifying notes in treble clef. Work as fast, yet accurately, as possible. Use flash cards or your mnemonic of choice (silly memorization phrase) to memorize *all* the notes. Lots and lots of drill is key... You want these to become second nature!

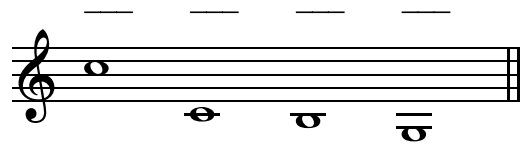
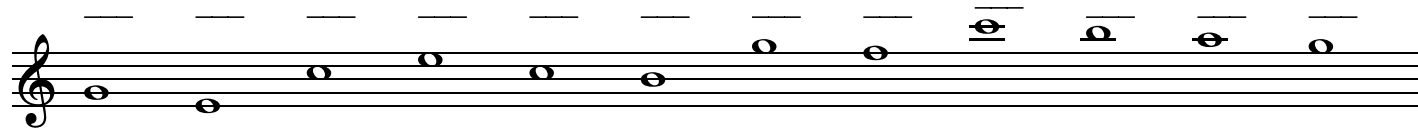




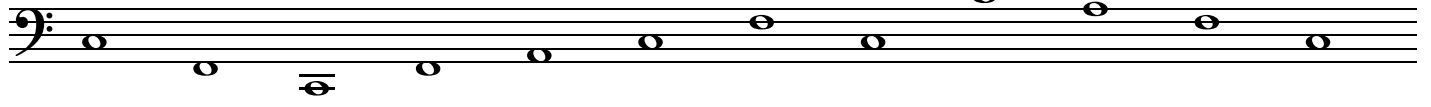









C F C F A C F C C A F C



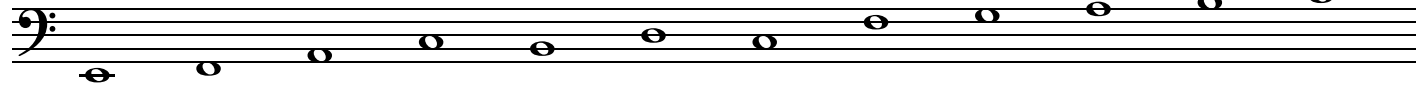
A musical staff with a bass clef. It contains 12 notes, each corresponding to a letter above it. The notes are: C (middle C), F (below C), C (below F), F (below C), A (below F), C (below A), F (below C), C (below F), C (below F), A (below C), F (below A), and C (below F). The notes are written as half notes.

A F A C

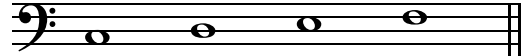


A musical staff with a bass clef. It contains 4 notes corresponding to the letters A, F, A, and C. The notes are: A (below F), F (below A), A (below F), and C (below A). The notes are written as half notes.

E F A C B D C F G A B C




C D E F




The image shows two staves of musical notation. The first staff is a bass clef staff with a key signature of one flat (B-flat) and a 4/4 time signature. It contains a sequence of 12 notes: E, F, A, C, B, D, C, F, G, A, B, C. The notes are written as half notes. The second staff is also a bass clef staff with a key signature of one flat and a 4/4 time signature. It contains a sequence of 4 notes: C, D, E, F. The notes are written as half notes. The staves are connected by a brace on the left side.

F G A D C F A G C A G D



A musical staff with a bass clef. It contains twelve notes, each corresponding to a letter above it. The notes are: F (first space), G (second space), A (third space), D (fourth space), C (third space), F (second space), A (first space), G (below the staff), C (below the staff), A (below the staff), G (below the staff), and D (below the staff).

C A B F



A musical staff with a bass clef. It contains four notes corresponding to the letters C, A, B, and F. The notes are: C (below the staff), A (below the staff), B (below the staff), and F (below the staff). The staff ends with a double bar line.

